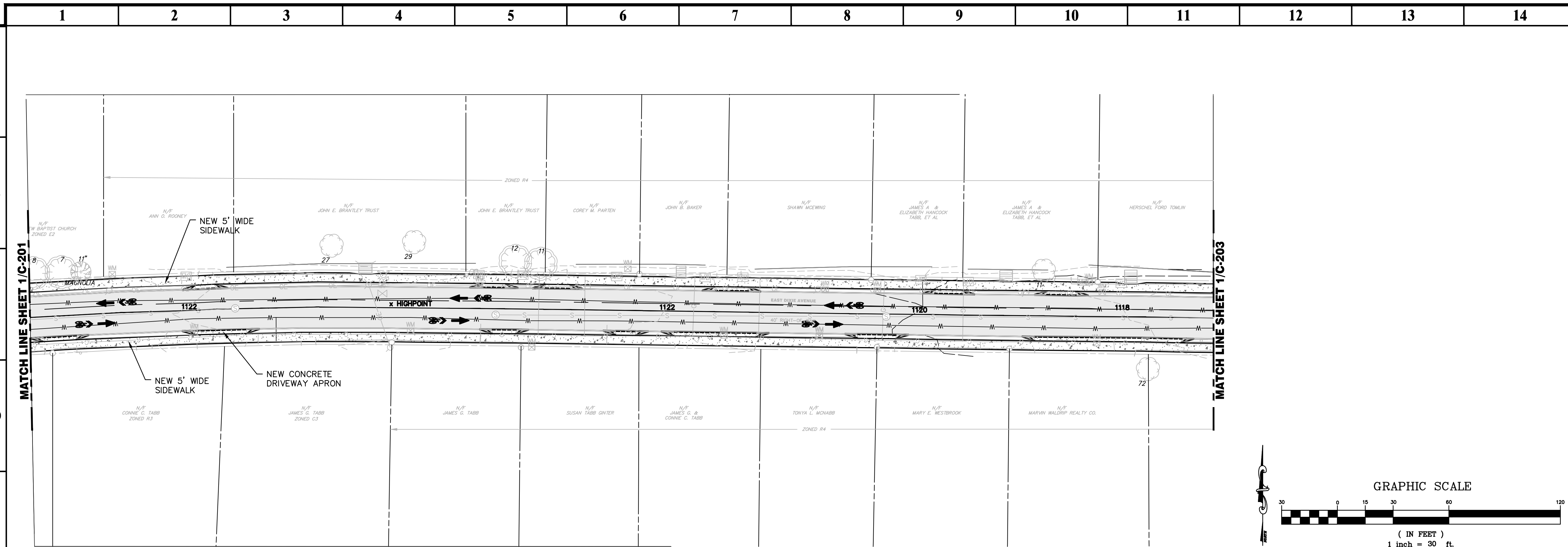
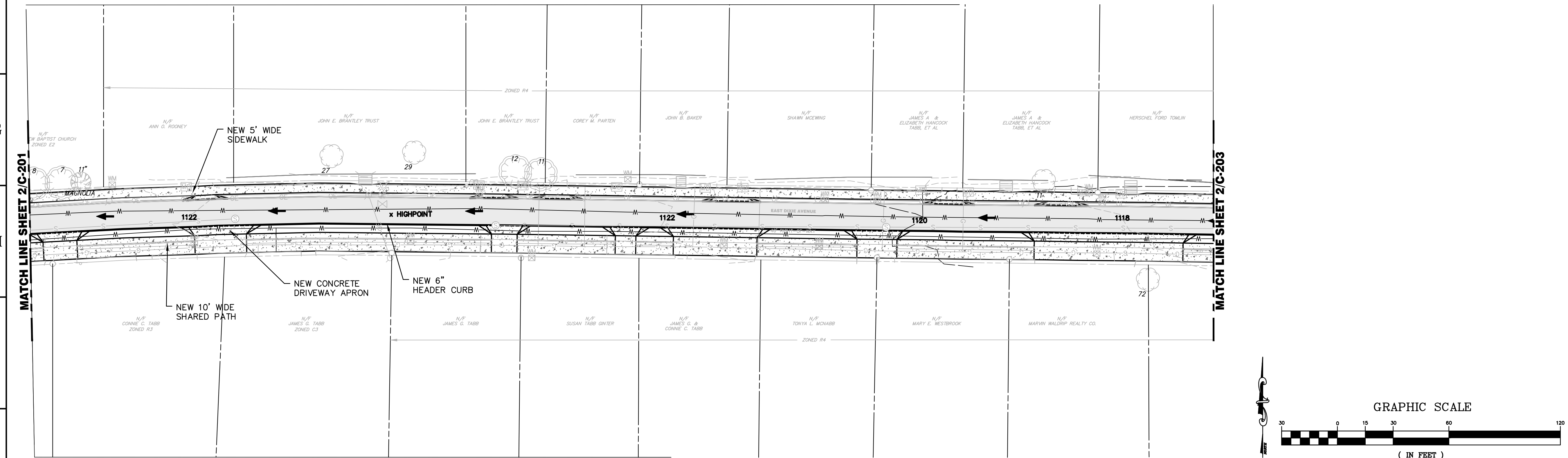
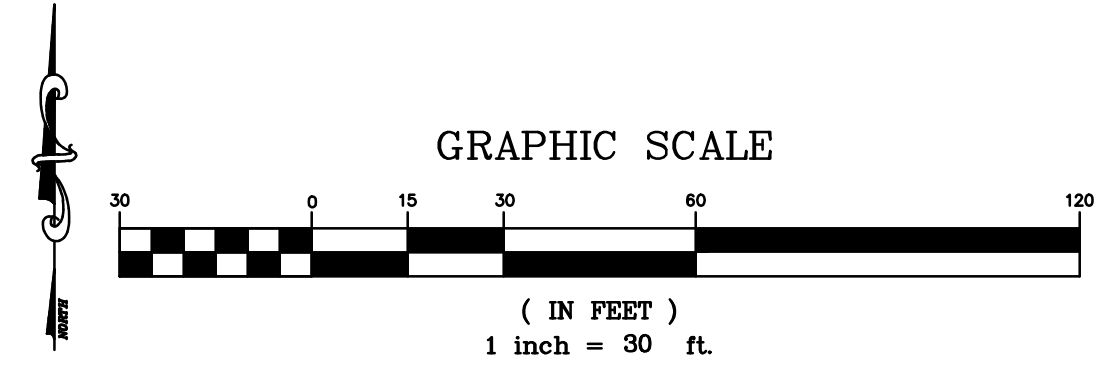


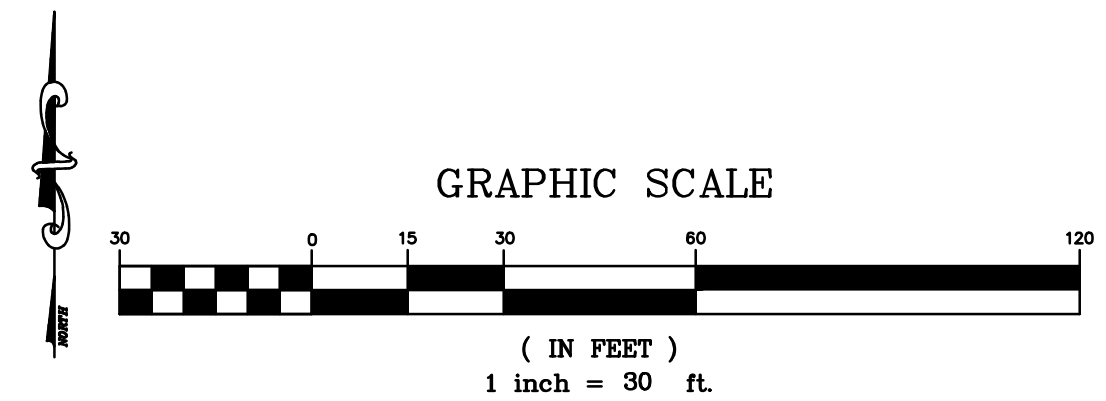
R:\2034-0001_Marietta-KMCR_Gap_Trail\3_ENGINEERING\Drawings\C-201-2034-0001.dwg Fri, 07/27/12 2:35 PM



1 EAST DIXIE AVENUE - SHARED ROAD PATH ALIGNMENT
SCALE: 1"=30'



2 EAST DIXIE AVENUE - ONE-WAY ROAD PATH ALIGNMENT
SCALE: 1"=30'



PRIME ENGINEERING
INCORPORATED
3715 NORTHSIDE PARKWAY NW
300 NORTHCREEK, SUITE 200
ATLANTA, GEORGIA 30327
404-425-7100

PROJECT: KENNESAW MOUNTAIN TO CHATTAHOOCHEE RIVER (KMCR) TRAIL, "GAP" SECTION TRANSPORTATION ENHANCEMENT (TE) PROJECT
PI NO. 0010705
PREPARED FOR: CITY OF MARIETTA, GEORGIA

SEAL

DATE:

© 2012 PRIME ENGINEERING, INC. Scales, as stated hereon, are valid on the original drawing the dimensions of which are 22 by 34 inches. These scales, noted hereon, are hereby changed by the ratio of the overall sheet dimensions of the print to corresponding dimensions of the original drawing. This drawing is the property of PRIME ENGINEERING, INCORPORATED and is not to be reproduced or copied in whole or in part. It is only to be used for the project and is not to be used on any other project. It is to be returned upon request.

DRAWING TITLE
CONCEPT PLAN

DRAWING DATE	07/19/2012	DRAWN BY	KLL
DRAWING SCALE	1"=30'	DESIGNED BY	KLL
PROJECT NUMBER	2034-0001	CHECKED BY	RRM
DRAWING NUMBER	C-202		

NOT ISSUED FOR CONSTRUCTION