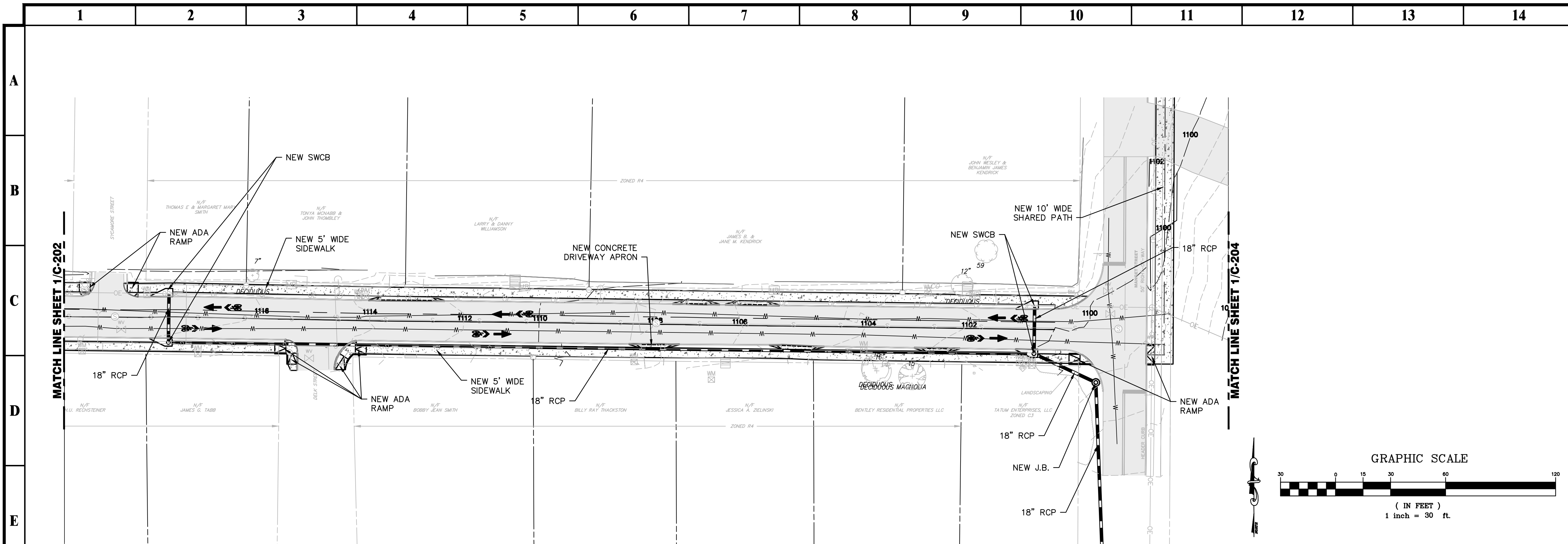
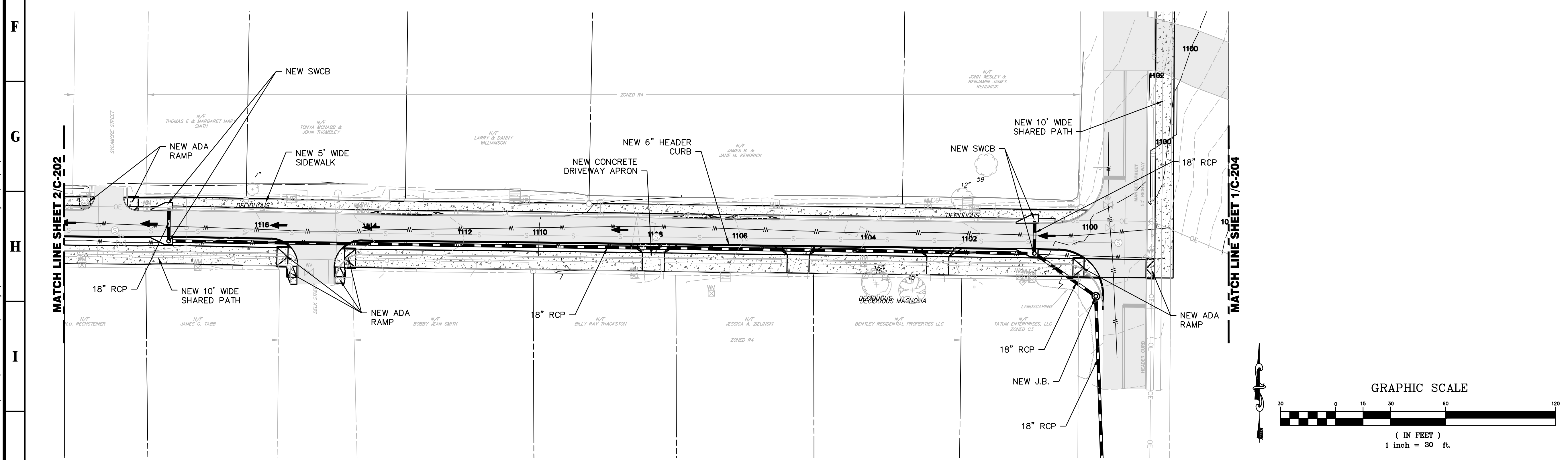
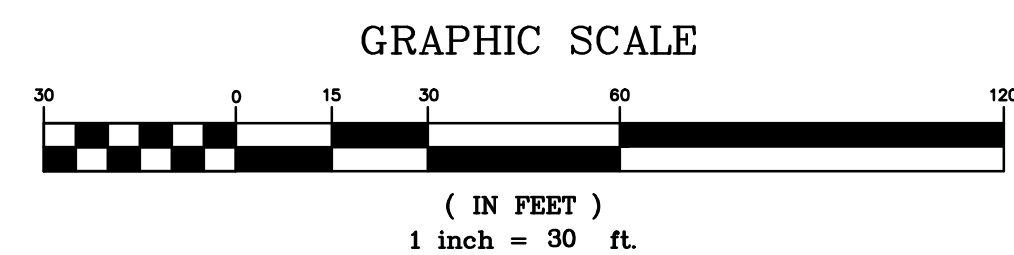


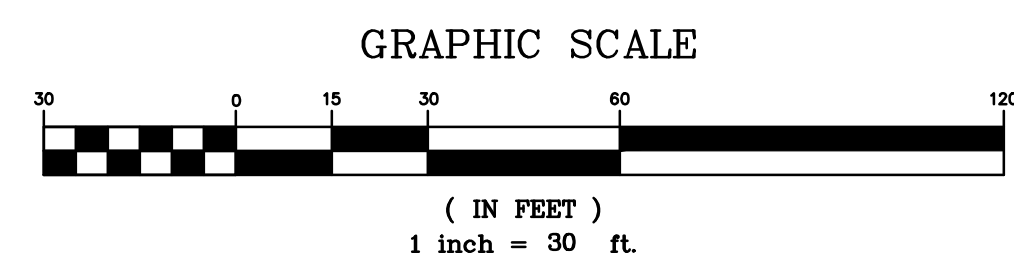
R:\2034-0001\_Marietta-KMCR\_Gap\_Traffic\3\_ENGINEERING\Drawings\C-201-2034-0001.dwg Fri, 07/27/12 2:35 PM



**1 EAST DIXIE AVENUE - SHARED ROAD PATH ALIGNMENT**  
 SCALE: 1"=30'



**2 EAST DIXIE AVENUE - ONE-WAY ROAD PATH ALIGNMENT**  
 SCALE: 1"=30'



**PRIME ENGINEERING**  
 INCORPORATED  
 3715 NORTHSIDE PARKWAY NW  
 300 NORTHCREEK, SUITE 200  
 ATLANTA, GEORGIA 30327  
 404-425-7100

**PROJECT:**  
 KENNESAW MOUNTAIN TO  
 CHATTAHOOCHEE RIVER  
 (KMCR) TRAIL, "GAP" SECTION  
 TRANSPORTATION  
 ENHANCEMENT (TE) PROJECT  
 PI NO. 0010705

**PREPARED FOR:**  
 CITY OF MARIETTA, GEORGIA

SEAL

DATE:

© 2012 PRIME ENGINEERING, INC.  
 Scales, as stated hereon, are valid on the original drawing the dimensions of which are 22 by 34 inches. These scales, noted hereon, are hereby changed by the ratio of the overall sheet dimensions of the print to corresponding dimensions of the original drawing. This drawing is the property of PRIME ENGINEERING, INCORPORATED and is not to be reproduced or copied in whole or in part. It is only to be used for the project and site specifically identified herein and is not to be used on any other project. It is to be returned upon request.

**DRAWING TITLE**  
**CONCEPT PLAN**

<b>DRAWING DATE</b>	07/19/2012	<b>DRAWN BY</b>	KLL
<b>DRAWING SCALE</b>	1"=30'	<b>DESIGNED BY</b>	KLL
<b>PROJECT NUMBER</b>	2034-0001	<b>CHECKED BY</b>	RRM
<b>DRAWING NUMBER</b>	<b>C-203</b>	<b>NOT ISSUED FOR CONSTRUCTION</b>	